

PI3K signaling of autophagy is required for starvation tolerance and virulence of *Cryptococcus neoformans*

Guowu Hu, ... , Yoshinori Ohsumi, Peter R. Williamson

J Clin Invest. 2008;118(3):1186-1197. <https://doi.org/10.1172/JCI32053>.

Research Article

AIDS/HIV

Autophagy is a process by which cells recycle cytoplasm and defective organelles during stress situations such as nutrient starvation. It can also be used by host cells as an immune defense mechanism to eliminate infectious pathogens. Here we describe the use of autophagy as a survival mechanism and virulence-associated trait by the human fungal pathogen *Cryptococcus neoformans*. We report that a mutant form of *C. neoformans* lacking the Vps34 PI3K (*vps34Δ*), which is known to be involved in autophagy in ascomycete yeast, was defective in the formation of autophagy-related 8-labeled (Atg8-labeled) vesicles and showed a dramatic attenuation in virulence in mouse models of infection. In addition, autophagic vesicles were observed in WT but not *vps34Δ* cells after phagocytosis by a murine macrophage cell line, and Atg8 expression was exhibited in WT *C. neoformans* during human infection of brain. To dissect the contribution of defective autophagy in *vps34Δ C. neoformans* during pathogenesis, a strain of *C. neoformans* in which Atg8 expression was knocked down by RNA interference was constructed and these fungi also demonstrated markedly attenuated virulence in a mouse model of infection. These results demonstrated PI3K signaling and autophagy as a virulence-associated trait and survival mechanism during infection with a fungal pathogen. Moreover, the data show that molecular dissection of such pathogen stress-response pathways may identify new approaches for chemotherapeutic [...]

Find the latest version:

<https://jci.me/32053/pdf>





PI3K signaling of autophagy is required for starvation tolerance and virulence of *Cryptococcus neoformans*

Guowu Hu,¹ Moshe Hacham,¹ Scott R. Waterman,¹ John Panepinto,¹ Soowan Shin,¹ Xiaoguang Liu,¹ Jack Gibbons,² Tibor Valyi-Nagy,³ Keisuke Obara,⁴ H. Ari Jaffe,⁵ Yoshinori Ohsumi,⁴ and Peter R. Williamson^{1,3,6}

¹Section of Infectious Diseases, Department of Medicine, ²Department of Biological Sciences, and ³Department of Pathology, Department of Medicine, University of Illinois at Chicago, Chicago, Illinois, USA. ⁴Division of Molecular Cell Biology, National Institute for Basic Biology, Okazaki, Japan.

⁵Section of Pulmonary Medicine and Critical Care, Department of Medicine, University of Illinois at Chicago, Chicago, Illinois, USA.

⁶Jesse Brown VA Medical Center, Chicago, Illinois, USA.

Autophagy is a process by which cells recycle cytoplasm and defective organelles during stress situations such as nutrient starvation. It can also be used by host cells as an immune defense mechanism to eliminate infectious pathogens. Here we describe the use of autophagy as a survival mechanism and virulence-associated trait by the human fungal pathogen *Cryptococcus neoformans*. We report that a mutant form of *C. neoformans* lacking the Vps34 PI3K (*vps34Δ*), which is known to be involved in autophagy in ascomycete yeast, was defective in the formation of autophagy-related 8-labeled (Atg8-labeled) vesicles and showed a dramatic attenuation in virulence in mouse models of infection. In addition, autophagic vesicles were observed in WT but not *vps34Δ* cells after phagocytosis by a murine macrophage cell line, and Atg8 expression was exhibited in WT *C. neoformans* during human infection of brain. To dissect the contribution of defective autophagy in *vps34Δ C. neoformans* during pathogenesis, a strain of *C. neoformans* in which Atg8 expression was knocked down by RNA interference was constructed and these fungi also demonstrated markedly attenuated virulence in a mouse model of infection. These results demonstrated PI3K signaling and autophagy as a virulence-associated trait and survival mechanism during infection with a fungal pathogen. Moreover, the data show that molecular dissection of such pathogen stress-response pathways may identify new approaches for chemotherapeutic interventions.

Introduction

Cryptococcus neoformans (Cn) is a major fungal pathogen primarily infecting immunocompromised hosts, especially patients with impaired cellular immunity related to HIV infection (1). It is generally believed that inhalation of desiccated yeasts or basidiospores from the environment is the route for primary pulmonary Cn infection. The alveolar macrophages (AMs) therefore serve as one of the first lines of anticryptococcal defense that must be overcome by a successful fungal intruder (2). While much is known about specific immunological killing mechanisms of macrophages that result in containment of intracellular yeast cells (3), only recently has study been devoted to understanding the host's ability to deprive the pathogen of essential elements necessary for survival and virulence. For example, in cryptococcosis, deprivation of oxygen and glucose results in a requirement for the oxygen sensor, Sre1 (4), and the gluconeogenesis enzyme Pck1 (5) in the pathogen. Encountering such a hostile nutrient environment thus requires a specific programmatic response by the pathogen, dissection of which may yield new insights into unique attributes of the host-pathogen interaction. Such study may also contribute to our understanding of how organisms adapt during their transition from environmental saprophytes to pathogens and may provide genetic predictors of strains that

have evolved to become the more successful pathogens. For example, clinical isolates showing more effective induction of high-affinity copper transport were recently found to be associated with a propensity to cause more severe neurological disease in a cohort of transplant patients (6).

The class III PI3K in ascomycete yeast, Vps34, has been shown to be involved in vesicular transport of vacuolar hydrolases to the vacuole lumen via endosomes (the so-called "CPY pathway") and autophagy under nutrient-deprived conditions (7). CPY requires the formation of PI3K complex II composed of Vps34, Vps15, Vps30 (Atg6), and Vps38 (8). Autophagy, involved in nutrient conservation during starvation, requires formation of a type I kinase subcomplex composed of Vps34, Vps15, Atg14, and Atg6 (8, 9), leading to transport vesicle formation initiated by lipid binding (lipidation) of Atg8 (10). The Tor signaling pathway in yeast responds to nutrient levels, and inhibition by rapamycin leads to an artificial induction of autophagy under nutrient-replete conditions (11). In mammalian systems, an additional class I PI3K activity is associated with activation of Tor signaling through a TSC2/TSC1-dependent pathway and is inhibitable by nanomolar concentrations of wortmannin (12). Indeed, while there is no TSC2/TSC1 homolog in *Saccharomyces cerevisiae* (Sc), a homolog of TSC2 has been described in *Schizosaccharomyces pombe* (13), and a homolog in Cn is apparent in the UniProt genome database (<http://beta.uniprot.org/>; accession no. Q5KJR4; 51% identical to *S. pombe*), suggesting higher yeast species may share a relationship between PI3K activity and TSC-mediated Tor activity.

Nonstandard abbreviations used: AM, alveolar macrophage; Cn, *Cryptococcus neoformans*; PI3P, phosphatidylinositol 3 phosphate; Sc, *Saccharomyces cerevisiae*.

Conflict of interest: The authors have declared that no conflict of interest exists.

Citation for this article: *J. Clin. Invest.* 118:1186–1197 (2008). doi:10.1172/JCI32053.

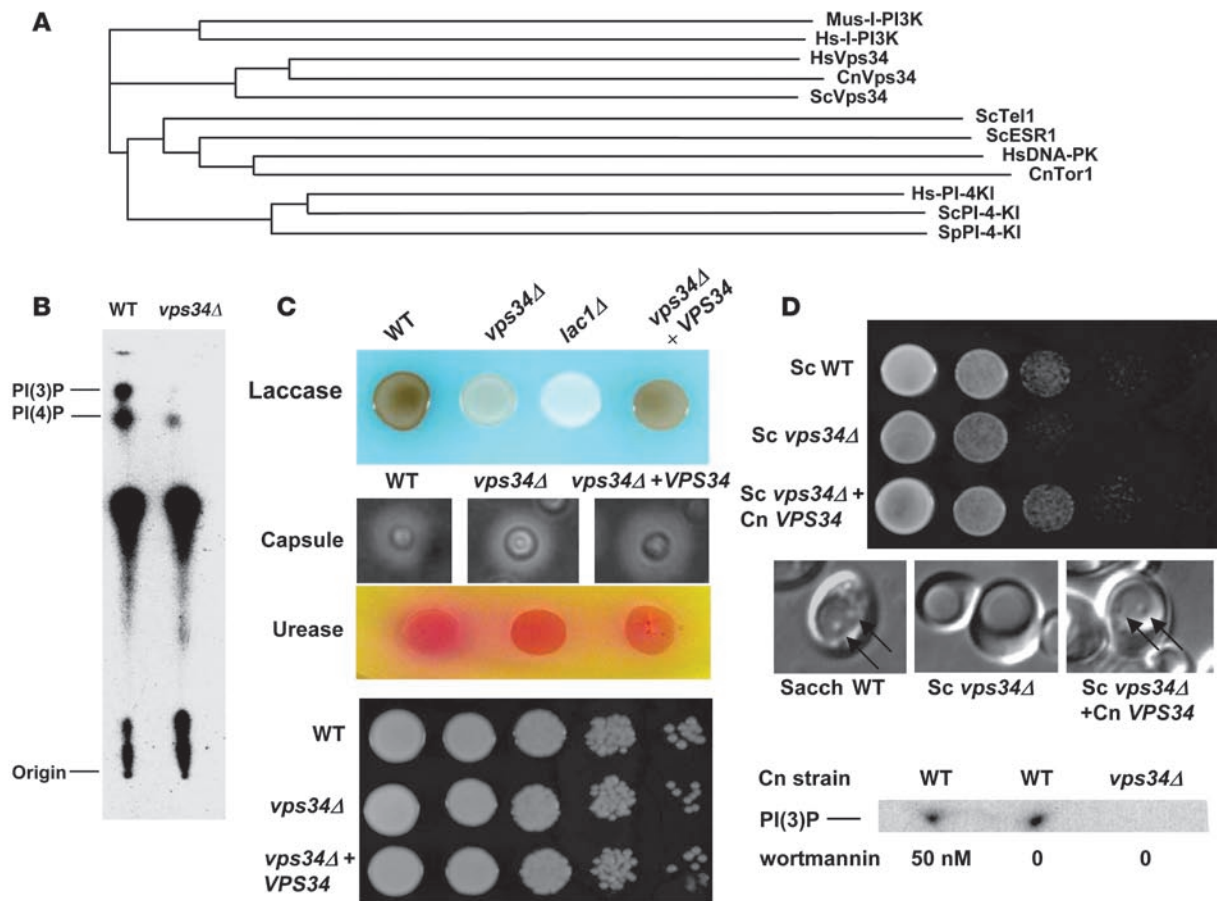


Figure 1

Phenotypes of a cryptococcal *VPS34* homolog in vitro. **(A)** Clustal-W analysis comparing closely related kinases. *Mus musculus* class I PI3K (GenBank NP 032865); human class I PI3K, Vps34, DNA-PK, and PI4K (GenBank AAX41023, NP 002638, AAA79184, and AAA56839, respectively); *Sc* Tel1, Esr1, PI4KI, Vps34 (GenBank CAA84909, CAA85094, NP 013408, and CAA37610, respectively); *S. pombe* PI4K (GenBank NP 595304); and *Cn* Tor1 (GenBank AAD16273). **(B)** Indicated mid-log phase fungal cells were starved for 4 h in YNB without amino acids or ammonium sulfate and cell lysates assayed for PI kinase activity by autoradiography of thin-layer chromatograms, as described in Methods. **(C)** Indicated *Cn* cells were assayed for laccase by melanin formation, capsule by India Ink microscopy, urease activity, and growth at 37°C on YPD agar as described in Methods. **(D)** Indicated *Sc* mid-log phase cells were assayed for growth at 37°C in YPD (upper panel) or incubated in YNB without amino acids or ammonium sulfate for 4 h in the presence of 1 mM PMSF and observed using DIC microscopy or as described in Methods (middle panel). Arrows point to autophagic bodies. Lower panel: *Cn* cells were subjected to starvation conditions and assayed for PI kinase activity as in **B** with or without addition of 50 nM wortmannin.

In the present study, we report the targeted deletion of a cryptococcal *VPS34* PI3K gene linked to intact laccase expression and use this to identify genetically linked attributes of virulence. The results show that although *VPS34* was largely dispensable for growth of *Cn* in nutrient-replete conditions at 37°C and was not required for expression of several important virulence factors such as capsule and urease, it played a large role in virulence and survival in macrophages. In addition, the *VPS34* mutation was associated with a defect in tolerance to nutrient starvation, related to an inability to undergo autophagy. Furthermore, molecular dissection of *VPS34*-related phenotypes was undertaken to determine the contribution of autophagy in cryptococcal pathogenesis, with the conclusion that RNAi suppression of the autophagy-related *ATG8* gene also resulted in loss of virulence in 2 mouse models of cryptococcosis. These studies thus provide genetic support for a role for PI3K and autophagy in the adaptation to nutrient starvation and virulence for a pathogenic fungus.

Results

Identification and mutation of a VPS34 homolog in Cn. Analysis of a laccase-associated cryptococcal annotated gene sequence (TIGR Database locus name 186.m03746; <http://www.tigr.org/tdb/e2k1/cna1>) showed strong homology to PI3Ks, including *VPS34* from *Sc* (35% identity; E value, e-130), and contained 2 conserved PI3K sequences, a catalytic domain (PI3Kc) at aa 554–918 (E value, 2e-124), and an accessory domain (PI3Ka) at aa 344–527 (E value, 6e-48). BLAST analysis of the NCBI database showed homology with PI3Ks only within the first 200 matches. In addition, Clustal-W analysis (EMBL-EBI database; <http://www.ebi.ac.uk/Tools/clustalw/index.html>) comparing closely related kinase members, as described by Shelton et al. (14), showed highest similarity to the class III Vps34 class of PI3Ks exemplified by Vps34 of *Sc*, less homology with the class I PI3Ks such as those from mice or humans, and even less similarity to other related kinases (Figure 1A). A *Cn* knockout strain, *vps34Δ*, was constructed (Supplemental

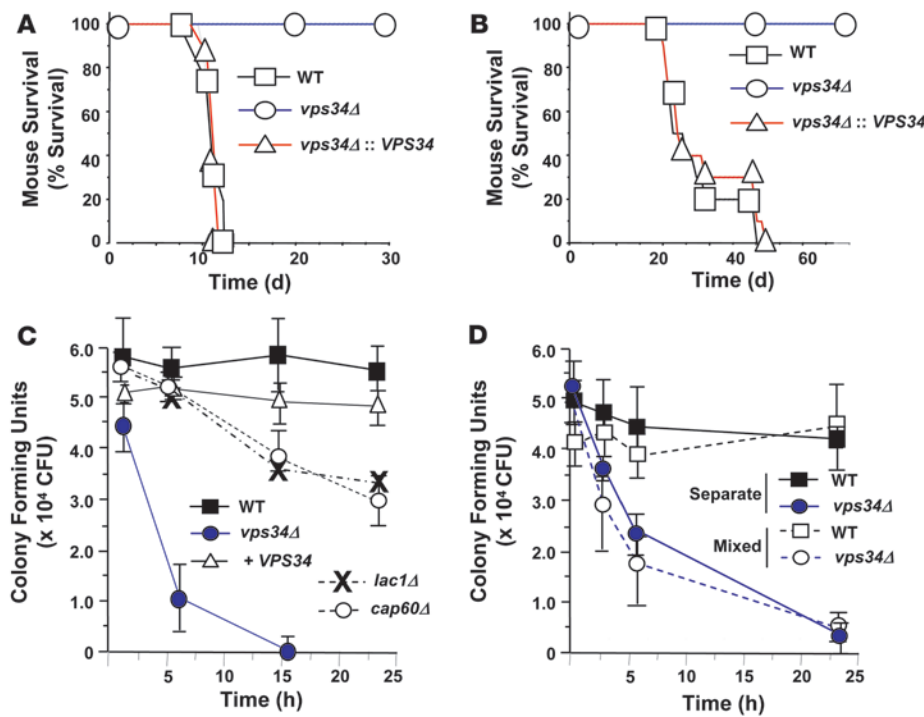


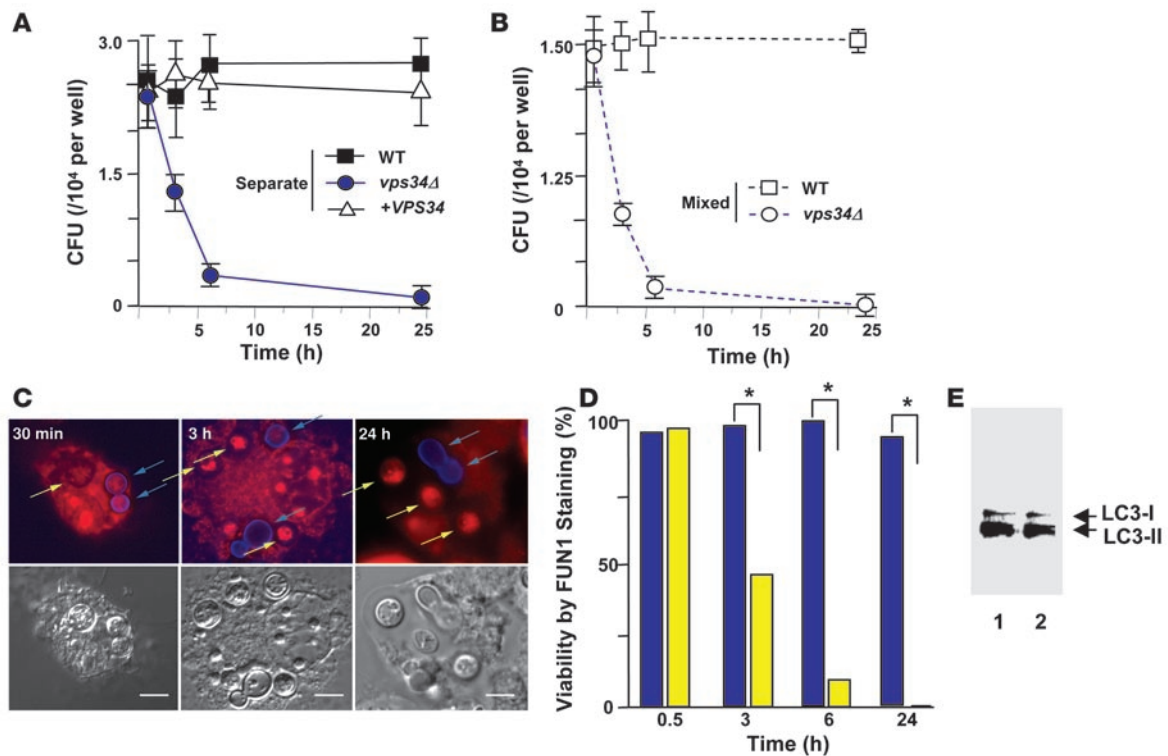
Figure 1; supplemental material available online with this article; doi:10.1172/JCI32053DS1) that demonstrated production of a number of phosphorylated phosphatidylinositol phosphates, including phosphatidylinositol 4 phosphate (PI4P), as described in ascomycete yeast (15), but also showed defective production of PI3P (Figure 1B) and reduced expression of laccase. However, the mutant retained production of the virulence factors capsule and urease (Figure 1C). Growth rate of the cryptococcal *vps34Δ* mutant was similar to WT at 30°C on agar (data not shown) and in liquid culture (doubling times: WT, 2.6 ± 0.3 h; *vps34Δ*, 2.8 ± 0.3 h; *vps34Δ* + *VPS34*, 2.4 ± 0.3 h), but there was only a barely discernible difference at 37°C on agar (Figure 1C) or in liquid culture (doubling times: WT, 2.8 ± 0.3 h; *vps34Δ*, 3.5 ± 0.4 h; *vps34Δ* + *VPS34*, 2.6 ± 0.3 h; *P* < 0.05 *vps34Δ* vs. WT or *vps34Δ* + *VPS34*). Retention of near WT growth at 37°C is in contrast to a more severe temperature-dependent growth defect of the homolog mutant strain from *Sc* (16). This difference could be due to redundancy in growth pathways in the basidiomycetous fungi and has also been found with other *vps*-class mutants from this fungus (17). To further characterize the cryptococcal *Vps34* activity, a *Sc vps34Δ* mutant was complemented with a cDNA fragment of the cryptococcal gene expressed under a *Saccharomyces* constitutive promoter. As shown in Figure 1D, complementation of the *Sc vps34Δ* mutant with *Cn VPS34* resulted in restoration of its temperature-sensitive defect at 37°C as well as production of autophagic bodies under starvation conditions (WT, 3.6 ± 0.3; *Sc vps34Δ*, 0.1 ± 0.1; *Sc vps34Δ* + *Cn VPS34*, 2.3 ± 0.4 vacuolar vesicles per cell; *n* = 15, *P* < 0.0001, *vps34Δ* vs. either WT or *Sc vps34Δ* + *Cn VPS34*) that were freely mobile within the *Sc* vacuole (data not shown). Furthermore, WT cryptococcal cell PI3P production was resistant to nanomolar concentrations of wortmannin (Figure 1D), consistent with a class III PI3K activity (15).

Role of PI3K in cryptococcal pathogenesis. Because of retention of growth at 37°C in the cryptococcal *vps34Δ* mutant strain, we tested for virulence in mice. While some attenuation in virulence

Figure 2

Role of *VPS34* in cryptococcosis. Indicated strains were inoculated intravenously into 10 Swiss Albino mice (10⁶ CFU; **A**) or intranasally into 10 CBA/J mice (10⁵ CFU; **B**) and sacrificed when moribund. (**C**) Same as in **B**, but animals were sacrificed at the indicated times, lungs harvested, and fungal cells measured by CFU on YPD (values represented as ± SEM; *n* = 3 for each strain at each time point) (**D**) Same as in **C** except that mice were inoculated with either 10⁵ CFU of the indicated strains or a mixture of 10⁵ WT and 10⁵ *vps34Δ* mutant strains in PBS containing 1.0% glucose, and cells were recovered from lungs and fungal strains identified in mixtures, as described in Methods.

was expected because of the minimally reduced growth rate and reduced laccase expression, the *vps34Δ* mutant strain was found to be avirulent in an intravenous (Figure 2A) as well as an intranasal (Figure 2B) mouse model and organ culture of surviving mice failed to identify live fungal cells in brain or lung. Parallel experiments comparing virulence of a *lac1Δ* mutant with WT in the same genetic background and using the same models and fungal inoculum found a smaller reduction in virulence in the *lac1Δ* mutant; (intravenous, Swiss Albino: median survival, WT, 7 d, *lac1Δ*, 11 d, *P* < 0.05; intranasal, CBA/J: median survival, WT, 25 d, *lac1Δ*, 29 d, *P* < 0.05), suggesting that the avirulence of the *vps34Δ* mutant was not due solely to its reduction in laccase activity. Remarkably, after i.n. inoculation of CBA/J mice (Figure 2C), the *vps34Δ* strain was rapidly cleared from the lungs, in contrast to WT or 2 previously described hypovirulent knockout strains of the virulence factors laccase (*lac1Δ*) or capsule (*cap60Δ*) (18, 19). Since there was a slight reduction in fungal CFU at the first time point 1 hour after inoculation (WT, 5.8 ± 0.6 × 10⁴ CFU/lung vs. *vps34Δ*, 4.4 ± 0.5 × 10⁴ CFU/lung), we conducted a second set of experiments focusing on the *vps34Δ* mutant strain to see whether a more prompt recovery from mice and addition of a glucose nutrient (1% glucose in PBS) could prevent lung clearance of the mutant strain. As shown in Figure 2D, initial recovery of fungal strains at 15 minutes after using an inoculum containing glucose resulted in *vps34Δ* fungal burden equal to that of WT (WT, 5.0 × 10⁴ ± 0.3 × 10⁴ vs. *vpsΔ*, 5.0 × 10⁴ ± 0.4 × 10⁴ CFU/lung) but still showed a rapid clearance compared with WT over the 24-hour time period. In addition, simultaneous inoculation of mice with the *vps34Δ* mutant strain containing an equivalent admixture of WT cells did not protect mutant fungal cells from rapid clearance, suggesting that the protection of WT cells compared with mutants, as shown in Figure 2C, was not due primarily to suppression of clearance mechanisms by the WT cells. (Differentiation of cryptococcal WT from *vps34Δ* mutant cells in mixtures

**Figure 3**

Survival of VPS34 strains in a J774.16 macrophage cell line. (A) Fungal cells were opsonized with anti-capsular antibody, and 10^5 cells were incubated with J774.16 macrophages for 30 min, washed extensively to remove non-phagocytosed cells, and at the indicated times, wells were washed with water containing 0.01% SDS and cultured for growth of fungal cells on YPD ($n = 3$ for each strain at each time point.) (B) Same as in A, but macrophages were incubated with 10^5 of a 50:50 mixture of WT and *vps34Δ* mutant cells, and strains were identified from recovered mixtures as described in Methods. (C) Same as in B, but *vps34Δ* mutant strains were pre-stained with calcofluor (blue) prior to macrophage inoculation and fungal viability determined by FUN-1 epifluorescence (red) at the indicated times. Blue arrows indicated *vps34Δ* cells, yellow arrows indicate WT cells. Scale bars: 5 microns. (D) Analysis of viable fungal cells in macrophage by FUN-1 staining. Macrophages containing mixtures of WT (unlabeled, blue bars) and *vps34Δ* mutant (calcofluor-labeled, yellow bars) cells were identified and fungal cells scored by the presence of FUN-1 staining at the indicated times ($*P < 0.001$). (E) Macrophages were infected with either WT or *vps34Δ* mutant fungal cells as in A, and at 3 h, macrophage protein was harvested and subjected to 15% SDS-PAGE, followed by western blot using 1:1000 anti-LC3 antibody and developed using a horseradish peroxidase anti-rabbit antibody as described in Methods. Lane 1 corresponds to macrophages infected with WT cells and lane 2 to macrophages infected with *vps34Δ* mutant fungal cells.

recovered from lung was made by laccase assay of 100 cells and confirmed by PCR using specific primers).

In addition, the rapid clearance of the *vps34Δ* mutant cells was accompanied by a vigorous host response as measured by the early procytokine marker TNF- α . TNF- α is induced during human and murine cryptococcosis (20) and is normally present 3–7 days after pulmonary inoculation with intact fungal cells (21). In as little as 5 hours, TNF- α production was significantly induced after inoculation with the *vps34Δ* mutant (Supplemental Figure 2), most likely a result of host exposure to liberated fungal proteins from rapidly dying mutant cells, which has been shown previously to induce this cytokine (22). These data show the importance of the *VPS34* locus during murine cryptococcosis.

Role of VPS34 and autophagy during macrophage residence of Cn. Since Cn is found predominantly within macrophages during lung infection, we examined the survival of the *vps34Δ* mutant strain after phagocytosis by a J774.16 macrophage cell line as previously described (23). As shown in Figure 3A, while WT strains exhibited good survival after macrophage phagocytosis, the *vps34Δ* mutant strain was rapidly killed over a similar time frame as that

exhibited in mouse lungs. Control experiments showed that the *vps34Δ* mutant strain showed greater than 95% survival in tissue culture medium over the time period tested (data not shown). The clearance of the *vps34Δ* strain was also more rapid than mutants of the 2 best-known virulence factors, laccase (*lac1Δ*) and capsule (*cap60Δ*) (data not shown). However, the degree of phagocytosis was similar between WT and *vps34Δ* cells (WT: $32\% \pm 8\%$; *vps34Δ*: $40\% \pm 8\%$, mean \pm SEM; $P > 0.10$). In addition, we conducted mixing experiments to determine if the relative survival of the WT mutant fungal strains was due to differential effects on host macrophages. The macrophage cell line was again induced as in experiments shown in Figure 3A but was inoculated with a 50:50 mixture of WT and *vps34Δ* cells, followed by removal of non-adherent cells and recovery of fungal cells at the indicated times by lysis of macrophages and quantitation on YPD agar. As shown in Figure 3B, addition of WT cells to the *vps34Δ* cells did not result in protection of mutant cells, suggesting that differences in survival between the strains was not due to suppression of macrophage killing mechanisms by WT cells. In addition, to confirm the mixing studies result, an equivalent macrophage-killing experiment

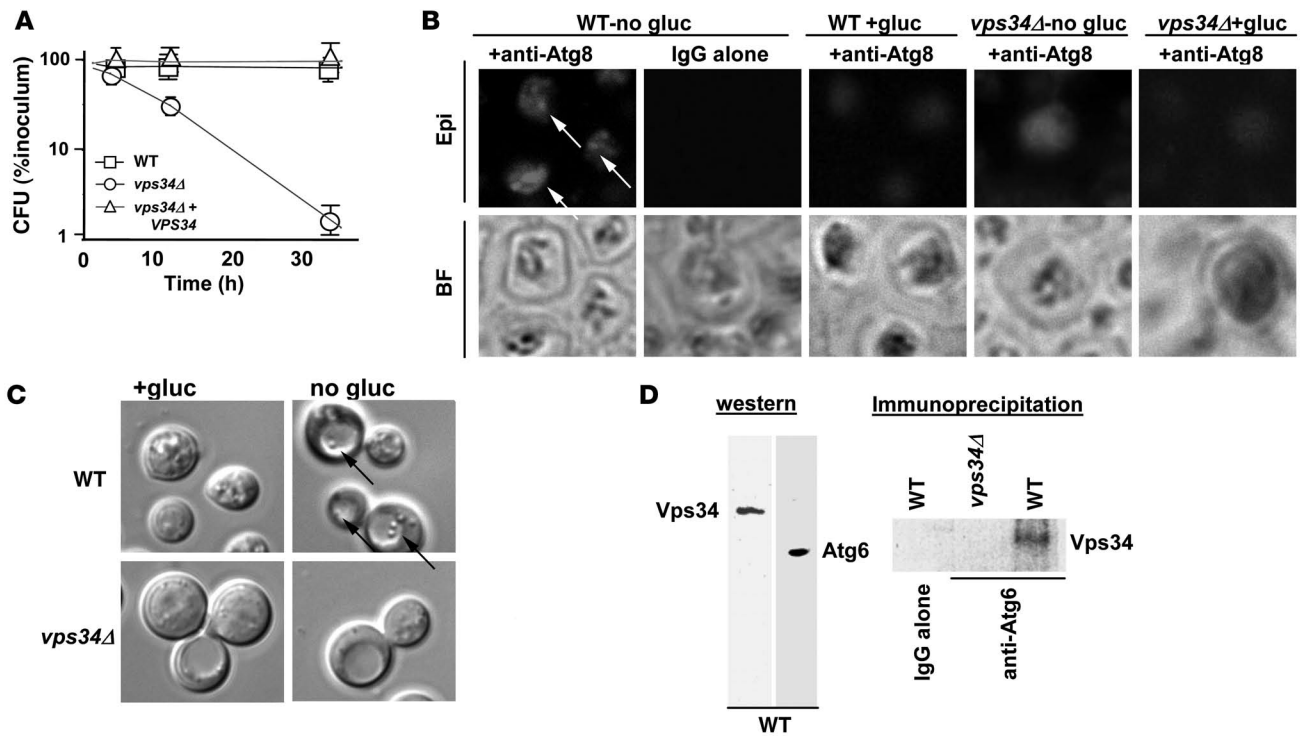


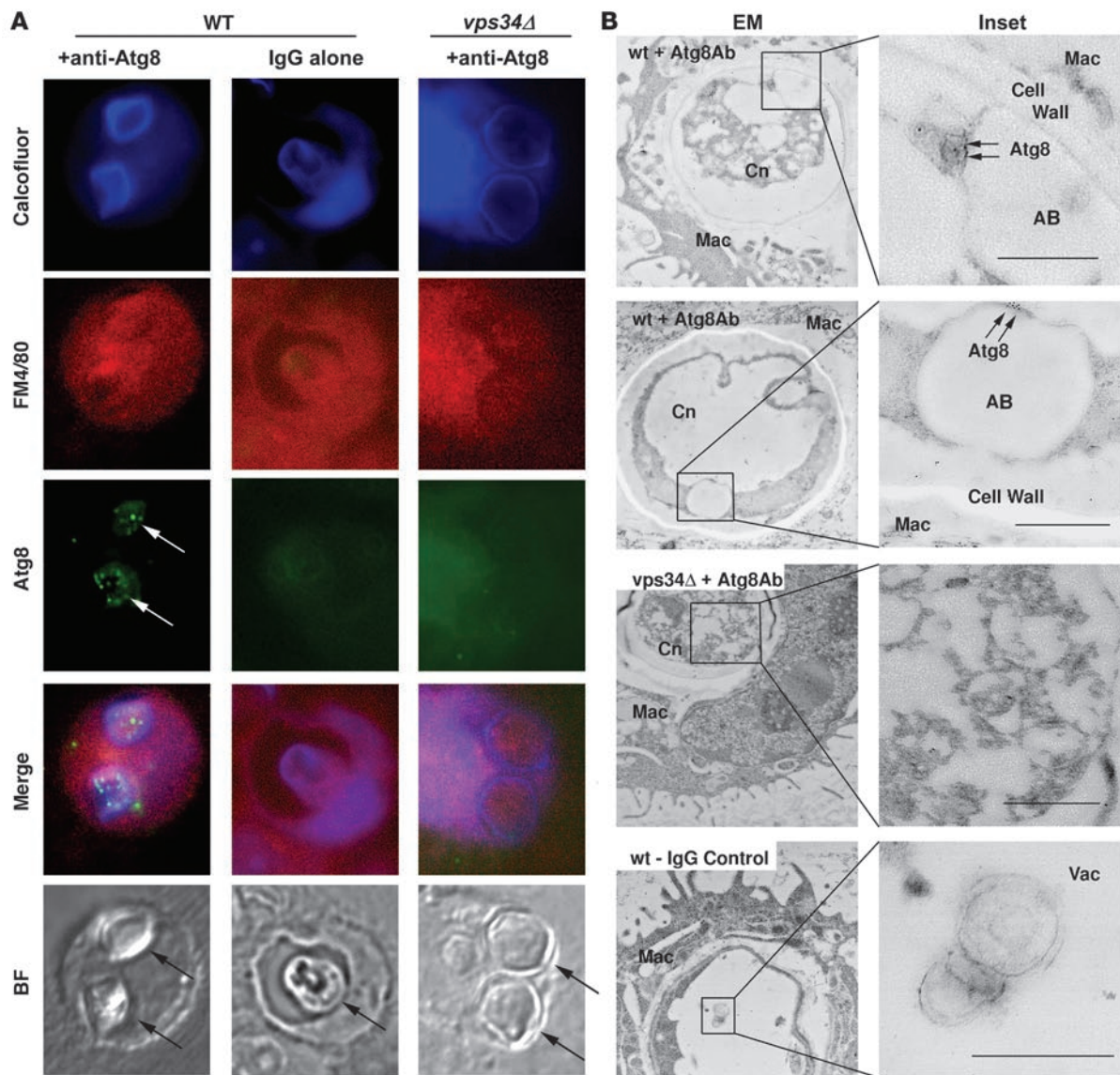
Figure 4

Tolerance of *VPS34* strains to nutrient starvation is associated with autophagic processes. (A) Starvation survival: Indicated log phase cells (grown in YPD) were incubated in YNB media without amino acids or ammonium sulfate at 37°C for the indicated times, followed by removal of aliquots, and cultured on YPD agar. (B) Indicated log phase cells were harvested (+gluc) or inoculated in YNB without amino acids or ammonium sulfate for 4 h at 37°C (no gluc) and labeled with anti-Atg8 antibody (+anti-Atg8) or rabbit polyclonal IgG (IgG alone), followed by anti-rabbit Alexa Fluor 594, and observed by epifluorescence (Epi) or bright field (BF). (C) Indicated log phase (+gluc) or log phase cells incubated in YNB without amino acids or ammonium sulfate containing 1 mM PMSF and 10 μg/ml nocodazole for 4 h (no gluc) were harvested and subjected to DIC microscopy. Arrows point to autophagic bodies within vacuoles. (D) Indicated cells were subjected to starvation conditions as in C, and whole-cell lysates (left panel) were subjected to western blot using anti-Vps34 antibody or anti-Atg6 antibody or immunoprecipitated with anti-Atg6 antibody or rabbit IgG, washed and eluted, and subjected to western blot using the indicated antibodies.

was conducted using a 50:50 mixture of WT and *vps34Δ* cells, the latter labeled by a trace amount of calcofluor that was shown not to affect cell viability. After removal of non-adherent cells, macrophage cultures were followed by microscopy, and at the indicated times, macrophages containing both WT and mutant cells were assayed for fungal cell viability by FUN-1 staining, used previously to assess cryptococcal viability in macrophages (24). As shown in Figure 3C, at 30 minutes, both WT and mutant cells showed good viability evident by intact FUN-1. FUN-1 staining was also evident within the cytoplasm of the metabolically active macrophage as previously described during fungal phagocytosis (24). However, over the 24-hour observation period, the *vps34Δ* mutant cells selectively lost viability, whereas the WT cells were unaffected in the same macrophage, similar to that expected based on the CFU mixing studies ($P = NS$ at 30 min, $n = 45$; $P < 0.001$ at 3 h, $n = 54$; $P < 0.001$ at 6 h, $n = 42$; $P < 0.001$ at 24 h, $n = 53$ fungal cells counted; see Figure 3D). In addition, infection of J774.16 macrophages with either WT or *vps34Δ* mutant cells showed equivalent expression and physiologic cleavage of the mammalian Atg8 homolog LC3-I into LC3-II in the macrophage cell line (Figure 3E), indicative of equivalent induction of macrophage autophagy, which occurs after IF- γ -stimulated macrophage killing (25).

Since *VPS34* has been implicated in resistance to starvation due to a role in autophagy (8), we next performed survival stud-

ies in vitro under starvation conditions. Indeed, in whole-genome microarray experiments, the autophagy-related genes *ATG3* and *ATG9* were shown to be upregulated in macrophages, although fungal autophagy was not demonstrated (26). As shown in Figure 4A, the Cn *vps34Δ* cells showed poor tolerance to starvation and the rates of fungal cell death were comparable with that exhibited after phagocytosis by J774.16 cells (comparison of slopes of log survival of *vps34Δ* between data in Figure 2D and Figure 3A; $P > 0.10$). In contrast, *vps34Δ* mutant cells showed vigorous growth under other conditions expected in macrophages such as oxidative stress (Supplemental Figure 3). Examination of *vps34Δ* cells under starvation conditions revealed defects in properties attributable to the process of autophagy. For example, while WT cells displayed evidence of autophagy-related (Atg8) association into vesicular structures in response to starvation conditions, the *vps34Δ* mutant cells showed a diffuse cytoplasmic localization (Figure 4B). Atg8 is a microtubule-associated protein that is induced and associated with vesicles during autophagy, and this vesicle-associated phenomenon has been used extensively as a marker of autophagy (27). Interestingly, as shown in Figure 4B, Atg8-labeled autophagic bodies were distributed throughout each cell, as opposed to the typical appearance of autophagic bodies principally within large vacuoles in yeast (28), most likely due to formation of smaller multiple vacuolar compartments, which is a characteristic of Cn (29).

**Figure 5**

Formation of autophagic bodies in Cn after macrophage phagocytosis. Indicated cells were subjected to phagocytosis by J774.16 cells as in Figure 3A, followed by fixation and embedding, and stained with anti-Atg8 antibody (+anti-Atg8) or rabbit IgG (IgG alone) and followed by an anti-rabbit Alexa Fluor 488 fluorescent antibody and anti-FM4/80 Alexa Fluor 594 antibody and observed for epifluorescence (**A**) or an anti-rabbit 5-nm gold-labeled antibody and observed by electron microscopy (**B**). AB, autophagic bodies; Mac, mouse macrophage; Vac, vacuole. Arrows point to intracellular fungal cells in **A** and gold particle labeling of Atg8 in **B**. Scale bars: 500 nm.

However, addition of the vacuolar-modifying microtubular inhibitor nocodazole (30) resulted in the formation of larger vacuoles in Cn during starvation conditions, which allowed better visualization of motile autophagic bodies using DIC microscopy under starvation conditions. Using this protocol, autophagic bodies were observed within WT cells but not in identically treated *vps34*Δ mutant cells (Figure 4C and Supplemental Movie). Analysis of multiple cryptococcal cells revealed a number of autophagic bodies in WT cells (range, 0–5; mean \pm SEM, 2.0 ± 0.4 ; $n = 15$), whereas none were observed in *vps34*Δ cells ($n = 15$; $P < 0.001$). Furthermore, because of the conserved nature of a number of autophagic proteins including Vps34 described above, Atg6 (22% similarity between Sc and Cn) and Atg8 (89% similarity between Sc and Cn)

rabbit antibodies against Sc Vps34, Sc Atg6, and Sc Atg8 cells were tested and showed immunoreactive bands equal to their predicted sizes (101, 63, and 14.5 kDa, respectively), with cryptococcal extracts on western blot (Figure 4D and Supplemental Figure 4). These immuno-crossreactive antibodies were used to show formation of autophagic complexes during starvation, demonstrated by coimmunoprecipitation of Vps34 by the autophagic protein Atg6, as reported previously in yeast (9, 31). Recruitment of autophagy-related proteins by Vps34 is an important step in the formation of the autophagic complex in yeast, and these data support a similar mechanism in Cn.

To determine whether autophagic processes occurred during macrophage residence of cryptococcal cells, vesicularization of

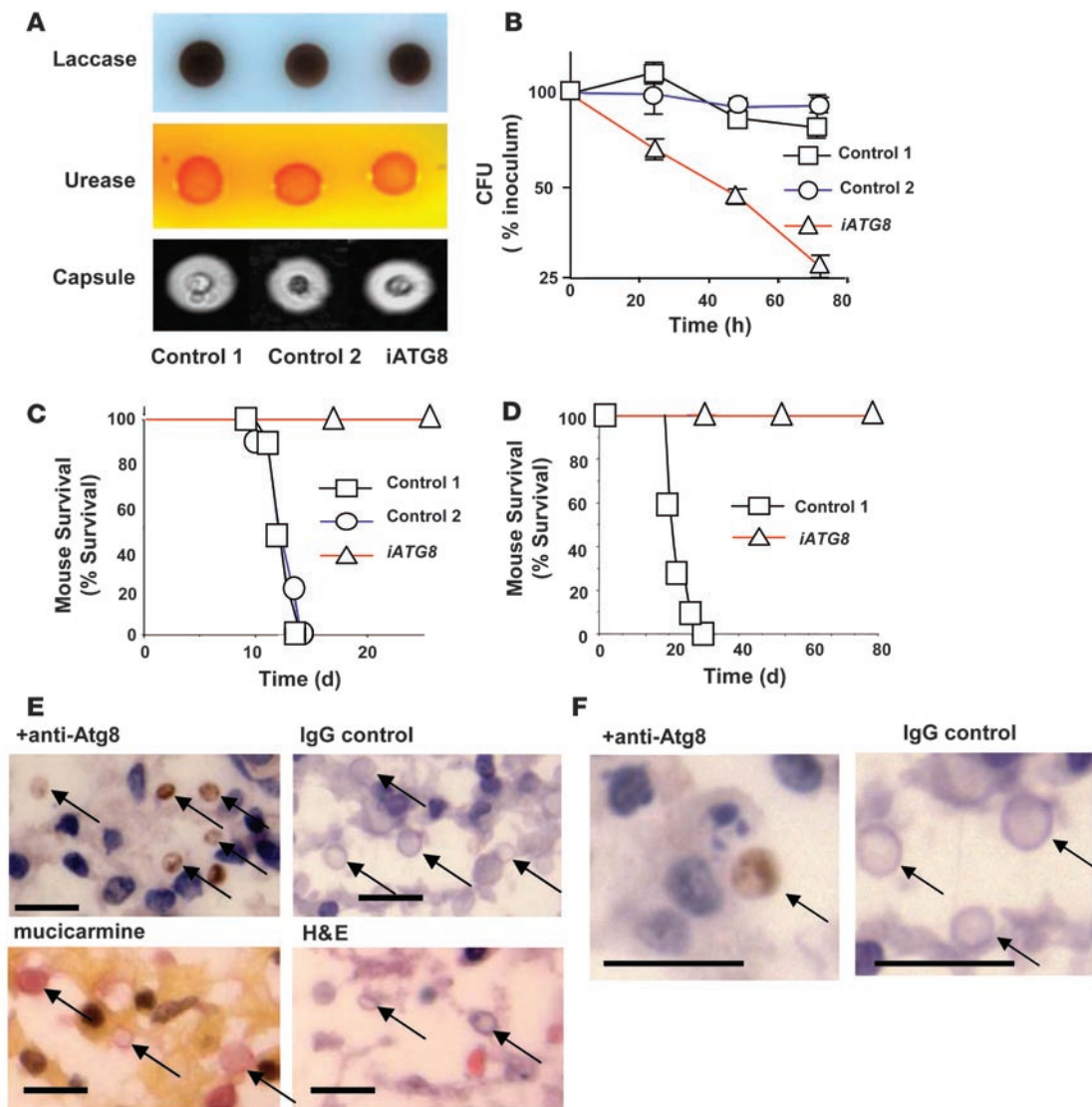


Figure 6

Role of *ATG8* in murine and human cryptococcosis. (A) Cn cells transformed with the *ATG8* RNAi construct (*iATG8*) or control plasmid (controls 1 and 2) assayed for laccase, urease, and capsule, as described in Methods. (B) Indicated mid-log phase strains incubated in YNB without amino acids or ammonium sulfate for the indicated times and cultured for growth of fungal cells on YPD. (C) Indicated strains (10^6 CFU) were inoculated intravenously into Swiss Albino mice and followed until moribund. (D) Indicated strains (10^5 CFU) were inoculated intranasally into CBA/J mice and followed until moribund. (E) Antibody staining of Cn-infected human brain tissue incubated with an anti-Atg8 antibody (+anti-Atg8) or rabbit IgG (IgG control) as well as an anti-rabbit horseradish peroxidase secondary antibody and developed with diaminobenzidine and counterstained with H&E. Lower panels show mucicarmine and H&E stain of equivalent tissue. (F) Higher magnification of intracellular fungal cells stained as in E. Arrows point to fungal cells. Scale bars: 10 μ m.

Atg8 was investigated after phagocytosis by the J774.16 macrophage cell line. Cryptococcal cells were identified by cell wall staining by the dye calcofluor, which also demonstrated some fluorescence with macrophages, as previously described (32). As shown in Figure 5A, J774.16 phagocytosis of WT but not *vps34* Δ mutant cells resulted in formation of Atg8-immunoreactive vesicles. This was visualized by epifluorescence after 3 hours of phagocytosis by the FM4/80-stained macrophage cell line and by the formation of Atg8-stained fungal autophagic bodies visualized by immunoelectron microscopy (Figure 5B). Most likely, induction of autophagy in phagocytosed fungal cells is the result of exposure to a nutrient-

poor phagolysosome in the macrophage, suggested recently by a requirement for virulence of phosphoenolpyruvate carboxykinase, which is a gluconeogenic enzyme required to synthesize glucose under carbon starvation conditions (5).

Reduced tolerance to starvation and virulence of an iATG8 knockdown strain. To molecularly dissect the contribution of autophagy to the *VPS34* phenotype during cryptococcal infection, a reduction in autophagic capacity was produced by RNA interference of the autophagy-related gene *ATG8*. Control strains were produced by transformation of fungal cells with an equivalent plasmid in equivalent copy number but not containing the RNAi construct.



The Cn *iATG8* strain retained WT growth under nutrient-replete conditions at 37°C (see Methods) and retained the virulence factors laccase, urease, and capsule (Figure 6A). However, the *iATG8* strain showed sensitivity to starvation (Figure 6B), although not quite as severe as the *vps34Δ* strain, which could be due to residual *ATG8* expression in the *iATG8* knockdown strain (see Supplemental Figure 4B). The *iATG8* knockdown strain also showed attenuated virulence in the intravenous mouse model (Figure 6C) as well as in an intranasal model (Figure 6D) compared with the control strains, with only small amounts of residual *iATG8* organisms noted in brains of sacrificed animals (<10³ CFU/brain). To determine whether cryptococcal Atg8 is expressed during human CNS disease, Atg8 immunoreactivity was demonstrated in fungal cells during infection of human brain (Figure 6, E and F), which showed vigorous Atg8 expression in fungal cells. In contrast, we did not see significant Atg8 reactive signal throughout brain tissue or on western blots of mouse brain (Supplemental Figure 4), suggesting that the Atg8 antibody was yeast specific. In summary, these studies demonstrate the role of *VPS34* signaling and autophagy in starvation response and in the pathogenesis of cryptococcosis.

Discussion

In the present study, identification and deletion of a *VPS34* gene associated with the virulence factor laccase allowed for the analysis of the role of inositol phosphate signaling, autophagy, and starvation response in the pathogen Cn. This expands further the genetic relationships between an immune modulatory virulence factor, laccase (33, 34), and starvation response programs such as autophagy that play a central role during virulence. Previously, regulation of laccase activity has been genetically linked to processes important under nutrient-limiting conditions such as gluconeogenesis (5) and high-affinity copper acquisition (6). Such a genetic association between laccase and attributes such as autophagy, important to survival during the search for nutrients, recalls the organism's environmental niche within the hollows of trees where laccase is involved in the generation of energy by the use of alternative substrates including degradation of wood lignins in the absence of glucose (35). The existence of such strong genetic relationships between virulence determinants and environmental genetic programs are a testament to the success of opportunistic pathogens such as Cn that appear to effortlessly switch between an environmental saprophyte and a virulent pathogen. In addition, laccase's extensive relationships to virulence determinants provides additional insights into why laccase and its product melanin has proven successful as a strong marker of pathogenic strains of *Cryptococcus* (36).

Autophagy is an evolutionarily conserved response to stress and has been linked to important protective roles in mammalian cells such as lifespan extension and protection from diverse human diseases including cancer, muscular disorders, neurodegeneration (e.g., Huntington, Alzheimer, and Parkinson diseases) (37–39). In the mammalian host-pathogen interaction, the role of autophagy has mostly favored the host, as induction of autophagy in macrophages has been found to be key in the control of replication of diverse prokaryotes such as *Mycobacterium tuberculosis* and *Legionella pneumophila* within autophagic vesicles (25, 40). However, the present studies indicate that PI3K-dependent induction of autophagy is also a tool used by the eukaryotic pathogen to ensure survival and effect host cell damage. Interestingly, the fungal pathogen *Candida albicans* has not been found to be dependent on autophagy for virulence (41), although a reduction in virulence was found by

deletion of a *vps34Δ* homolog (42), which may suggest that the 2 pathogens encounter different host-cell environments leading to varied requirements for an autophagic response. Alternatively, this could be a reflection of pathogen-specific alterations in the host cell environment. For example, Cn liberates an extensive polysaccharide capsule within macrophages which has macrophage modulating properties that could alter the environment of the phagolysosome (43). In addition, *Candida* species may elicit specific protective properties that improve nutrient conditions similar to *Mycobacterium* within the host environment (44), making it less dependent on its own autophagosomal machinery. Regardless of mechanisms, these different requirements for autophagy between pathogens offer insights into the unique aspects of interactions between fungi of different species and the mammalian host.

Induction of autophagy in Cn was found to be dependent on the PI3K locus *VPS34*, as previously described in ascomycetous yeast (8). Interestingly, the almost WT growth of the cryptococcal *vps34Δ* mutant at 37°C distinguishes it from the temperature sensitivity of the homologous mutation in ascomycetous yeast and may reflect the evolution of higher eukaryotes. However, in spite of robust growth at 37°C, the cryptococcal *vps34Δ* mutant showed a remarkably fast clearance from lungs of mice, which was associated with a defect in tolerance of starvation and formation of autophagic bodies. Such extremely different survival patterns of the *vps34Δ* mutant in tissue culture media containing glucose compared with survival patterns in the host environment suggest that the former is not representative of host conditions. This discrepancy in pathogen response between these 2 conditions may have implications for the selection of conditions used to mimic the host environment, such as the determination of antifungal minimum inhibitory concentrations (MICs). These analyses, used to predict antifungal resistance during clinical infections, were conducted under nutrient-replete conditions as recommended by the National Committee for Clinical Laboratory Standards (45, 46). Unfortunately, cryptococcal fungal MICs have shown a remarkable inability to predict clinical endpoints (47), which could be partly due to differences in antifungal resistance within differing nutrient environments.

In summary, while these data suggest that an effective response, such as PI3K signaling and autophagy, by the pathogen to starvation encountered during infection may be detrimental to the host, they also suggest how attention to fungal stress response pathways may lead to more effective preventative or treatment modalities tailored to the unique environment of the host.

Methods

Fungal strains, plasmids, media, and genomic databases

Cn ATCC 208821 (H99) was a generous gift of J. Perfect (Duke University, Durham, North Carolina, USA). Strain H99FOA19 (H99 *Matc*, *ura5*) (29) was employed as a recipient strain for creating targeted gene deletion. For starvation experiments, the strains were grown in YPD media (2% glucose, 1% yeast extract, 2% Bacto-peptone) or 2% glucose in yeast nitrogen base (YNB; Becton Dickinson) or were incubated in YNB without amino acids or ammonium sulfate (Becton Dickinson) media. Asparagine minimum selective media for transformant selection and for detection of laccase production were previously described (48). Plasmid pPM8 and pCIP containing the *URA5* gene was a kind gift of K.J. Kwon-Chung (NIH, Bethesda, Maryland, USA). Plasmids containing the hygromycin resistance gene was a gift of G. Cox (Duke University, Durham, North Carolina, USA).



Sc WT (BY4730) and *vps34* mutant strain clone ID 15149 was acquired from Opensystems Inc. Cryptococcal genes were identified using the serotype D TIGR genomic database (<http://www.tigr.org/tdb/e2k1/cna1>) as well as the Cn serotype A (<http://www.broad.mit.edu>) and UniProt (<http://beta.uniprot.org>) databases. Clustal-W analysis was determined as previously described (14) using the EMBL-EBI database (<http://www.ebi.ac.uk/Tools/clustalw/index.html>).

Cell lines and culture media

J774.16 (ATCC) is a murine macrophage-like cell line derived from a reticulum sarcoma. Cells were maintained at 37°C in 5% CO₂ in DMEM (Invitrogen) supplemented with 10% heat-inactivated FCS (Harlan Sprague Dawley Inc.), Cellgrow 1× nonessential amino acids (Mediatech), penicillin/streptomycin, and 10% NCTC-109 medium (Invitrogen). Cell lines were used between 5 and 15 passages.

Disruption and complementation of VPS34 in Cn and in Sc

Standard methods were used for disruption and complementation of the *VPS34* gene, as described previously (29). Briefly, to make the deletion construct, 2 PCR-amplified fragments of the Cn *VPS34* homolog (using primers VPS34-14446S-XbaI, 5'-GCCGGCTCTAGAGTGTGTCTTCCTC-GACA, and VPS34-1989A-RI, 5'-CCACGAATTCTGTGGAGGGTGAGAGTTG; VPS34-4656S-BglII, GCCGCCAGATCTGCCATTATGGAAGATC, and VPS34-5055A-XhoI, 5'-GCCGCCCTCGAGTATGGGTAGTTATACATCTTG), the first digested with *XbaI* and *EcoRI* and the second digested with *BglII* and *XhoI*, was mixed with a 1.3-kb PCR fragment of the Cn *URA5* gene described previously (49), digested with *BglII* and *EcoRI* and ligated to BlueScript SK digested with *XbaI* and *XhoI*. The final disruption allele with a 1.3-kb *URA5* marker flanked on either side by a 500-bp DNA sequence homologous to genomic regions of the *VPS34* gene was PCR-amplified and introduced into H99FOA cells via a biolistic approach (50) to effect a 2.6-kb deletion within the *VPS34* coding region. Transformants were screened for potential *VPS34* deletion mutant by a PCR approach, and the specific disruption of the *VPS34* gene in candidate mutants was verified by Southern blot analysis (Supplemental Figure 1). To complement the *vps34Δ* mutant strain, a 6.3-kb genomic fragment encompassing the full ORF of *Vps34* plus ~1200 bp of the 5' promoter region was PCR amplified using a primer set of VPS34-5-S-Clal (5'-CCATCGATGGTTCTACCTCTCACTCTCAAC-3') and VPS34-6569-A-Clal (5'-CCATCGATGGGATCGTCCACTACCGAAT-TAT-3') and then cloned into a modified Bluescript SK vector (Stratagene) containing the 2-kb hygromycin-B resistance gene under the control of a cryptococcal actin promoter (50) to generate the complementation construct, which was introduced into *vps34Δ* mutant cells by electroporation, as previously described (29), and transformants were selected on hygromycin-containing YEPD agar plates (150 U/ml). Heterologous genomic insertion of the WT *VPS34* and retention of the *URA5* deletion construct in the complement was verified by uncut Southern blot and PCR. Complementation of a Sc mutant with Cn *VPS34* was effected by overexpression of a PCR-amplified copy of *VPS34* from a previously described Cn H99 cDNA library (29) in the Sc CEN expression vector pYX-112 (R&D Systems; a gift of D. Askew, University of Cincinnati, Cincinnati, Ohio, USA) under the TPI promoter using primers *vps34*-2076-S-AvrII (5'-GGCCCTAGGATGAGTCTGTCAACTCTAAGC-3') and *vps34*-4319-A-XhoI (5'-CCGCTC-GAGCTAATCCCGAAGATACTGCG-3') after endonuclease digestion with *AvrII* and *XhoI* and ligation into compatible sites of the pYX-112 yeast vector followed by recovery, sequencing, and transformation into the Sc *vps34* mutant strains. Control transformations were effected by transformation with the pYX-112 empty vector alone.

PI3K activity was determined by the method of Storz et al. (51). Briefly, cell extract of indicated strains and PI3K activity assayed by addition of

10 μg sonicated phosphatidylinositol in 30 mM Hepes buffer, pH 7.4, 30 mM MgCl₂, 200 μM adenosine, 50 μM ATP, 20 μCi [^γ-³²P]ATP ± 0–50 nM wortmannin for 10 min, followed by analysis of phosphate products by thin-layer chromatography by the buffer system of Storz et al. as well as Chen (15), with reference to standard PI3P and PI4P (Sigma-Aldrich).

RNA interference

RNAi suppression of *ATG8* was performed by a method similar to that described previously (5). The *ATG8* gene was PCR amplified from an H99 cDNA mass-excised library using primers ATG8-2238S-RI (5'-GCC-GCGAATTCTGTGAGAAGGCTGAGAAGA) and ATG8-2859A-XhoI (5'-GCCGCCCTCGAGTTAAACATAGTTGCTTTGCTTA) and 2 fragments of the *ATG8* gene were ligated downstream from an *ACT1* promoter of a pORA-KUTAP cryptococcal shuttle vector described previously (17), in a sense-antisense fashion on either side of a linker fragment consisting of a 500-bp PCR-amplified fragment of intron I of *LAC1* generated from a *LAC1* genomic clone using primers INTRON-XhoS and INTRON-XhoA to produce plasmid ORA-i-ATG8. ORA-i-ATG8 was linearized and transformed into H99 Matα, *ura5*-19 described previously (29), and transformants selected on minimal media. Control strains (controls 1 and 2) were produced by transforming a H99 Matα *ura5* strain with an identical pORA-KUTAP plasmid without the *ATG8* RNAi construct. While *URA* transformation markers have been problematic for virulence studies in some fungi such as *Candida* due to gene dosing of the inserted uracil marker (52), Cn virulence does not appear to be as sensitive to levels of uracil synthesis and, for example, all single loci disruptions using *URA5* in this fungus from our laboratory have been successfully complemented with full restoration of virulence in strains having heterologously localized *URA5* genes (53). Nevertheless, to control for *URA5* expression between strains, 2 independent transformants (controls 1 and 2) carrying control pORA-KUTAP plasmids and 1 containing the same plasmid with the above iATG8 RNA interference construct were selected based on equivalent copy number determined on uncut Southern blots as described and were matched within 20% for equivalent expression of *URA5* (ratio of *URA5* to rRNA by densitometry) by northern blot analysis (see Supplemental Figure 4). Growth of the 3 strains was equivalent as measured by doubling time in 2% glucose, YNB at 37°C (control 1, 3.1 ± 0.4; control 2, 2.8 ± 0.4; iATG8, 3.0 ± 0.2 h, mean ± SEM). In addition, in control experiments testing for the ability of strains expressing the control KUTAP plasmids to produce virulence in mice, the WT H99, control 1, and control 2 strains were injected intravenously into 10 mice per group (inoculum, 1 × 10⁶ CFU) and followed until moribund, demonstrating that survival times were not significantly different between WT Cn (H99) and the 2 strains containing the KUTAP plasmid (mean time of death ± SEM: H99 WT, 11 ± 0.5 d; control 1, 12.6 ± 0.5 d; control 2, 12.5 ± 0.4 d, *P* > 0.05 by ANOVA between all groups).

Macrophage killing assays

The J774.16 macrophage-like cell line (ATCC) was used to evaluate the ability of the *vps34Δ* mutant strains to grow inside macrophages by a previously described method (54). Cells were allowed to grow for 5–7 days in DMEM (Cellgro) supplemented 10% fetal calf serum, 100 μg/ml Cellgro penicillin-streptomycin at 37°C in the presence of 5% CO₂, and then harvested from monolayers using 0.25% trypsin, and the number of cells were counted with a hemacytometer. The macrophage concentration was adjusted to 10⁶ cells/ml, and 100 μl of the macrophage suspension was added to each well of a 12-well plate. The cells were primed with murine IFN-γ (Sigma-Aldrich) at a concentration of 50 U/ml and were incubated at 37°C, 5% CO₂ overnight. Yeast cell suspensions (10⁷/ml) of indicated fungal cells were prepared from fresh cultures and antibody 18B7 (IgG1) (a generous gift of A. Casadevall) added (10 μg/ml) and incubated at 37°C for 30 min. Viability of the inocu-



lum was determined to be >80% by CFU measurement in each case. To each well in the 96-well plate, 10^6 antibody-treated cryptococcal cells were added plus 50 units of IFN- γ (Sigma-Aldrich) and 1 μ g LPS and incubated at 37°C 5% CO₂. The macrophage and yeast mixtures were incubated for 30 min, and extracellular yeast cells were removed by washing with PBS 3 times. Parallel experiments using the macrophage impermeant dye uvitex 2B showed that greater than 90% of adherent cells were intracellular by the method of Levitz (55). At the indicated times after addition, macrophages were lysed with 0.1% SDS in water. Pilot experiments showed that incubation in 0.1% SDS resulted in no loss of viability of Cn strains. The collected yeast cells were finally washed with and suspended in PBS and plated on chloramphenicol-containing YPD agar for colony counts. For macrophage western blots (Figure 3E), lysis was conducted in the presence of a protease inhibitor cocktail (P-8215; Sigma-Aldrich) and protein separated from intact fungal cells by centrifugation prior to SDS-PAGE. For mixing studies (Figure 3A), 100 recovered fungal cells were assayed for each time point for laccase activity, and WT cells were identified by intact laccase activity. This result was confirmed by PCR amplification of 1 of every 10 strains using specific primers. All experiments were done in triplicate. Macrophage mixing studies were also performed by labeling fungal cells with 17 μ g/ml of calcofluor dye, followed by washing to remove excess dye prior to mixing with unlabeled cells and addition to macrophage cultures. Pilot studies showed no loss of fungal viability with calcofluor staining under these conditions. Fungal viability was determined by FUN-1 epifluorescence in macrophages containing both WT and mutant strains identified by calcofluor epifluorescence at the indicated times, as described previously (24). Phagocytic index was calculated as the number of ingested yeast cells per 100 macrophages according to Kozel et al. (56). Phagocytic index was calculated as the mean number of ingested yeast cells per 100 J774.16 cells \pm SEM; $n = 8$ for each group.

Starvation stress response and growth assays

To assess the tolerance of fungal cells to starvation conditions, yeast cells of overnight cultures in YPD liquid medium of indicated strains were collected, washed, and resuspended to a concentration of 10^8 cells/ml in 15 ml YNB without amino acids or ammonium sulfate (Difco) in a 50-ml tube and then cultivated at 37°C with shaking at 250 rpm/min. At the indicated time point, 100 μ l of each strain suspension was removed and used to determine cell viability based on CFU counting on YPD agar using at least a 10,000-fold dilution followed by appropriate serial dilutions. Fungal growth was determined by spotting 1:10 serial dilutions of mid-log phase suspensions of indicated fungal cells on the indicated agar, and quantitative growth curves were performed by incubating log phase fungal cells in the indicated liquid media to a concentration of 1×10^6 /ml and following serial cell counts at hourly intervals according to the methods of Panepinto (5).

Detection of vacuolar autophagic bodies was based on a modification of the method of Kirisako et al. (28). Previous studies had shown that under starvation response, cryptococcal cells typically form multiple small vacuoles, rather than one large vacuole typical of ascomycete yeast (29), making observation of motile autophagic bodies within these structures difficult. Pilot studies determined that addition of nocodazole, which has previously been shown to modify vacuolar structures (30) but not autophagy (28), resulted in successful visualization of multiple motile vesicles in Cn. Thus, indicated mid-log phase cells were incubated in YNB without amino acids or ammonium sulfate for 4 h at 30°C in the presence of 5 mM PMSF and 10 μ g/ml nocodazole and observed by DIC microscopy. Autophagy was also quantitated by the method of Noda et al. (11) by the production of alkaline phosphatase.

Electron microscopy

The method of Zhu et al. was used for immunoelectron microscopy (57). Briefly, cells were incubated 3 h after phagocytosis by J774.1 cells, removed

by gentle agitation, and fixed in 4% (vol/vol) paraformaldehyde, 0.05% (vol/vol) glutaraldehyde in 100 mM sodium phosphate buffer, pH 7.2 for 16 h at 4°C. Cells were then washed 3 times for 10 min per wash in phosphate buffer, then dehydrated in a graded series of ethanol concentrations (15%, 30%, 50%, 75%, and 100% vol/vol) with 2 changes each for 45 min. Infiltration was continued with 2 parts ethanol to 1 part LR White resin, then 1:1, and 1:2 each for 2 days. Pure LR white infiltration was completed over 24 h with 3 changes, and the samples were then polymerized in 1 ml of pure LR White resin in a vacuum oven at 50°C for 3 d. Cured blocks were trimmed and thin-sectioned with a diamond knife on a Riechert Ultra Cut E ultramicrotome (Leica) and the sections picked up on 200-hex-mesh Ni grids. The thin sections on Ni grids were incubated at room temperature in blocking solution (0.8% [wt/vol] BSA, 0.1% [wt/vol] immunogold-silver stain-quality gelatin, 5% [wt/vol] normal goat serum in PBS, pH 7.4) for 45 min, washed twice in 0.8% (wt/vol) BSA, 0.1% (wt/vol) gelatin, 0.025% (vol/vol) Tween 20 in pH 7.4 PBS, and incubated overnight with 1:200 of a rabbit anti-Atg8 antibody (1:500 dilution) in 0.8% (wt/vol) BSA, 0.1% (wt/vol) gelatin, 1% (vol/vol) normal goat serum in BPS, washed twice in washing solution, and incubated with immunogold-labeled secondary antibody (goat anti-rabbit IgG; Amersham) diluted 1:25 for 4 h. Grids were washed 6 times with the washing solution for 5 min per wash, then twice with PBS, and the samples fixed with 2% (vol/vol) glutaraldehyde in PBS for 10 min. Grids were then washed twice in PBS and 3 times in distilled water, dried, stained with 2% (wt/vol) aqueous uranyl acetate for 5 min, dried, stained with lead citrate for 2 minutes, and photographed with a JEOL 1200 EX transmission electron microscope.

Antibody staining, western blotting, and coimmunoprecipitation

Immunofluorescence of intact cells. The method of Tucker and Casadevall (54) was adapted as follows: Cells were grown to mid-log phase and either harvested or washed twice in sterile water and incubated for the indicated time in YNB without amino acids or ammonium sulfate at 37°C. Cells were fixed in 3% formaldehyde for 1 h at 4°C, washed extensively, and then subjected to spheroplasting using 40 mg/ml of lysing enzyme from *Trichoderma harzianum* (Amersham) in 1 M sorbitol, 10 mM sodium citrate, pH 5.8, as previously described (58) for 4 h at 30°C. Cells were then washed in 1M sorbitol and 10 mM sodium citrate buffer, diluted 1:8 in PBS, dried on microscope slides, fixed in 100% anhydrous methanol at -60°C, and then dried again. To quench autofluorescence, cells were incubated in 0.1 M glycine for 10 min. Cells were then incubated with a solution of 1:500 dilution of rabbit anti-yeast Atg8 (Abcam) or IgG purified from rabbit serum (Sigma-Aldrich) in PBS containing 1 mg/ml BSA (Sigma-Aldrich) at 4°C for 1 h, followed by extensive washing in PBS, then incubation for 1 h at 4°C with 1:1000 Alexa Fluor 594 chicken anti-rabbit antibody followed by 3 washes with PBS and immunofluorescence examined using an Olympus IX-70 microscope with Slide Book 4 deconvolution software (Intelligent Imaging Innovations Inc.).

Western blots. Western blots using cryptococcal cell extract, the anti-Atg8 antibody described above (1:5000), rabbit anti-Vps34 (1:2000) (8), or rabbit anti-rat LC3 (1:1000; MBL Medical and Biological Laboratories; ref. 59) and a mouse anti-rabbit HRP antibody (Sigma-Aldrich) (1:10,000) were performed as previously described (57).

Antibody staining of sectioned yeast cells. WT or *vps34* Δ mutant cells were grown to log phase in YPD, recovered by centrifugation, and processed as for immunoelectron microscopy, except that sections were adhered to glass plates and incubated with a 1:500 dilution of the anti-Atg8 antibody or purified rabbit polyclonal IgG as described above followed by a 1:500 HRP-labeled anti-mouse antibody.

Coimmunoprecipitation. Coimmunoprecipitation was performed by an adaptation of the method of Zhang et al. (60). Briefly, rabbit anti-Atg6



or purified rabbit polyclonal IgG was linked to G-Sepharose and cross linked using the Seize X Protein G immunoprecipitation kit according to the manufacturer's directions (Pierce Biotechnology). Indicated mid-log phase Cn cells were incubated in YNB without amino acids or ammonium sulfate for 3 h at 30°C, and cell lysate (1 mg) was incubated with the linked Sepharose, followed by extensive washing, elution, and western blotting using the indicated antibodies as described above.

Cytokine analysis

Cytokine analysis was conducted as previously described (61). Briefly, lungs were excised and removed on ice under aseptic conditions, rinsed 3 times in PBS, weighed, and rinsed in antibiotic-containing (100 U/ml penicillin, 100 mg/ml streptomycin) RPMI-1640 (Sigma-Aldrich), and 1 lung of each mouse was homogenized on ice and the other was subjected to fixation and histologic preparation. The collected homogenate for cytokine analysis was cleared by centrifugation, and lysates were sterilized by filtration and stored at -20°C. A mixture of protease/oxygenation inhibitors (0.2 mM PMSF, 10 mg/ml aprotinin, 10 mg/ml leupeptin, 10 mg/ml pepstatin, and 0.5 mM dithiothreitol) was added during preparation of organ samples to neutralize the effects of tissue proteases. Measurement of TNF-α levels was carried out using the TNF-α multiplex kit (Biosource/Invitrogen) according to the manufacturer's instructions.

Virulence factor expression and virulence studies

Capsule was measured by India Ink microscopy (29) and urease production by incubation on Christensen's agar (62), and the method of Liu et al. (63) was used to measure laccase activity. Virulence studies were conducted according to a previously described intravenous mouse meningoencephalitis model (64) using 10 Swiss Albino mice or an intranasal model using 10 CBA/J mice for each Cn strain (65). Fungal viability was confirmed by growth of inocula on YPD agar. Animal studies were approved by the Uni-

versity of Illinois at Chicago Animal Care Committee. Studies involving human tissue were approved by the University of Illinois at Chicago Office for the Protection of Research Subjects and the Institutional Review Board (protocol #2004-0600).

Statistics

Statistical significance of mouse survival times was assessed by Kruskal-Wallis analysis (ANOVA on Ranks). Pairwise analyses were performed post hoc by using Dunn's procedure. Autophagic cell comparisons were performed by a χ² 2-sided test using a 2 × 2 contingency table. Fungal viability in macrophage cultures was compared by Fisher's exact test. Statistical analysis was conducted using GraphPad Prism software, version 4.03. In mouse mortality studies, time of death of the survivors was recorded as the day of experimental termination. Unless otherwise specified, all results are expressed as mean ± SEM.

Acknowledgments

We would like to thank J. Moscat, P. Dennis, and G. Thomas for review of the manuscript. This work was supported in part by US Public Health Service Grant NIH-AI45995 and -AI49371. We also acknowledge the use of the *C. neoformans* Genome Project, Stanford Genome Technology Center (<http://www-sequence.stanford.edu>), funded by the NIAID/NIH under cooperative agreement AI47087.

Received for publication March 7, 2007, and accepted in revised form December 5, 2007.

Address correspondence to: Peter R. Williamson, University of Illinois at Chicago, Room 888, Building 910, m/c 735, 808 S. Wood St., Chicago, Illinois 60612, USA. Phone: (312) 996-6070; Fax: (312) 413-1657; E-mail: prw@uic.edu.

1. Perfect, J.R., Wong, B., Chang, Y.C., Kwon-Chung, K.J., and Williamson, P.R. 1998. *Cryptococcus neoformans*: virulence and host defences. *Med. Mycol.* **36**(Suppl. 1):79-86.
2. Huffnagle, G.B., et al. 2000. Leukocyte recruitment during pulmonary *Cryptococcus neoformans* infection. *Immunopharmacology*. **48**:231-236.
3. Feldmesser, M., Tucker, S., and Casadevall, A. 2001. Intracellular parasitism of macrophages by *Cryptococcus neoformans*. *Trends Microbiol.* **9**:273-278.
4. Chun, C., Liu, O., and Madhani, H. 2007. A Link between virulence and homeostatic responses to hypoxia during infection by the human fungal pathogen *Cryptococcus neoformans*. *PLoS Pathogens*. **3**:e22.
5. Panepinto, J., et al. 2005. The DEAD-box RNA helicase Vad1 regulates multiple virulence-associated genes in *Cryptococcus neoformans*. *J. Clin. Invest.* **115**:632-641.
6. Waterman, S., et al. 2007. Role of a *CUFI-CTR4* copper regulatory axis in the virulence of *Cryptococcus neoformans*. *J. Clin. Invest.* **117**:794-802.
7. Burda, P., Padilla, S., Sarkear, S., and Emr, S. 2002. Retromer function in endosome-to-Golgi retrograde transport is regulated by the yeast Vps35 PtdIns 3-kinase. *J. Cell Sci.* **115**:3889-3900.
8. Kihara, A., Noda, T., Ishihara, N., and Ohsumi, Y. 2001. Two distinct vps34 phohatidylinositol 3-kinase complexes function in autophagy and carboxypeptidase Y sorting in *Saccharomyces cerevisiae*. *J. Cell Biol.* **152**:519-530.
9. Kametaka, S., Okano, T., Ohsumi, M., and Ohsumi, Y. 1998. Apg14p and Apg6/Vps30p form a protein complex essential for autophagy in the yeast, *Saccharomyces cerevisiae*. *J. Biol. Chem.* **273**:22284-22291.
10. Ichimura, Y., et al. 2000. A ubiquitin-like system mediates protein lipidation. *Nature*. **408**:488-492.
11. Noda, T., and Ohsumi, Y. 1998. Tor, a phosphatidylinositol kinase homologue, controls autophagy in yeast. *J. Biol. Chem.* **273**:3963-3966.
12. Ma, L., Chen, Z., Erdjument-Bromage, H., Tempst, P., and Pandolfi, P. 2005. Phosphorylation and functional inactivation of TSC2 by Erk: Implications for tuberous sclerosis and cancer pathogenesis. *Cell*. **121**:179-193.
13. van Slegtenhorst, M., Carr, E., Stoyanova, R., Kruger, W.D., and Henske, E.P. 2004. Tsc1 and tsc2 regulate arginine uptake and metabolism in *Schizosaccharomyces pombe*. *J. Biol. Chem.* **279**:12706-12713.
14. Shelton, S., et al. 2003. *Saccharomyces cerevisiae* contains a type II phosphoinositide 4-kinase. *Biochem. J.* **371**:533-540.
15. Chen, H., Salopek, T., and Jimbow, K. 2001. The role of phosphoinositide 3-kinase in the sorting and transport of newly synthesized tyrosinase-related protein-1 (TRP-1). *J. Invest. Dermatol. Symp. Proc.* **6**:105-114.
16. Herman, P., and Emr, S. 1990. Characterization of VPS34, a gene required for vacuolar protein sorting and vacuole segregation in *Saccharomyces cerevisiae*. *Mol. Cell. Biol.* **10**:6742-6754.
17. Liu, X., Hu, G., Panepinto, J., and Williamson, P. 2006. Role of a VPS41 homolog in starvation response and virulence of *Cryptococcus neoformans*. *Mol. Microbiol.* **61**:1132-1146.
18. Pukkila-Worley, R., et al. 2005. Transcriptional network of multiple capsule and melanin genes governed by the *Cryptococcus neoformans* cyclic AMP cascade. *Eukaryot. Cell*. **4**:190-201.
19. Moyrand, F., Klaproth, B., Himmelreich, U., Dromer, F., and Janbon, G. 2002. Isolation and characterization of capsule structure mutant strains of *Cryptococcus neoformans*. *Mol. Microbiol.* **45**:837-849.
20. Lortholary, O., et al. 1999. Cytokine profiles of AIDS patients are similar to those of mice with disseminated *Cryptococcus neoformans* infection. *Infect. Immun.* **67**:6314-6320.
21. Herring, A.C., Lee, J., McDonald, R.A., Toews, G.B., and Huffnagle, G.B. 2002. Induction of interleukin-12 and gamma interferon requires tumor necrosis factor alpha for protective T1-cell-mediated immunity to pulmonary *Cryptococcus neoformans* infection. *Infect. Immun.* **70**:2959-2964.
22. Lindell, D., Ballinger, M., McDonald, R., Toews, G., and Huffnagle, G. 2006. Diversity of the T-cell response to pulmonary *Cryptococcus neoformans* infection. *Infect. Immun.* **74**:4538-4548.
23. Feldmesser, M., Kress, Y., Novikoff, P., and Casadevall, A. 2000. *Cryptococcus neoformans* is a facultative intracellular pathogen in murine pulmonary infection. *Infect. Immun.* **68**:4225-4237.
24. Henry-Stanley, M., Garni, R., and Wells, C. 2004. Adaptation of FUN-1 and calcofluor white stains to assess the ability of viable and nonviable yeast to adhere to and be internalized by cultured mammalian cells. *J. Microbiol. Methods*. **59**:289-292.
25. Gutierrez, M., et al. 2004. Autophagy is a defense mechanism inhibiting BCG and *Mycobacterium tuberculosis* survival in infected macrophages. *Cell*. **119**:753-766.
26. Fan, W., Kraus, P., Boily, M., and Heitman, J. 2005. *Cryptococcus neoformans* gene expression during murine macrophage infection. *Eukaryot. Cell*. **4**:1420-1433.
27. Lang, T., et al. 1998. Aut2p and Aut7p, two novel microtubule-associated proteins are essential for delivery of autophagic vesicles to the vacuole. *EMBOJ.* **17**:3597-3607.
28. Kirisako, T., et al. 1999. Formation process of autophagosome is traced with Apg8/Aut7p in yeast. *J. Cell Biol.* **147**:435-446.
29. Erickson, T., et al. 2001. Multiple virulence factors



- of *Cryptococcus neoformans* are dependent on VPH1. *Mol. Microbiol.* **42**:1121–1131.
30. Guthrie, B., and Wickner, W. 1988. Yeast vacuoles fragment when microtubules are disrupted. *J. Cell Biol.* **107**:115–120.
31. Kim, J., Huang, W., Stromhaug, P., and Klionsky, D. 2002. Convergence of multiple autophagy and cytoplasm to vacuole targeting components to a perivacuolar membrane compartment prior to de novo vesicle formation. *J. Biol. Chem.* **277**:763–773.
32. Shin, Y., Kim, K., and Paik, Y. 2005. Alterations of protein expression in macrophages in response to *Candida albicans* infection. *Mol. Cells.* **20**:271–279.
33. Liu, L., Tewari, R.P., and Williamson, P.R. 1999. Laccase protects *Cryptococcus neoformans* from antifungal activity of alveolar macrophages. *Infect. Immun.* **67**:6034–6039.
34. Mednick, A.J., Nosanchuk, J.D., and Casadevall, A. 2005. Melanization of *Cryptococcus neoformans* affects lung inflammatory responses during cryptococcal infection. *Infect. Immun.* **73**:2012–2019.
35. Randhawa, H.S., Mussa, A.Y., and Khan, Z.U. 2001. Decaying wood in tree trunk hollows as a natural substrate for *Cryptococcus neoformans* and other yeast-like fungi of clinical interest. *Mycopathologia.* **151**:63–69.
36. Racicot, T.A., and Bulmer, G.S. 1985. Comparison of Media for the Isolation of *Cryptococcus neoformans*. *Appl. Environ. Microbiol.* **50**:548–549.
37. Levine, B., and Klionsky, D.J. 2004. Development by self-digestion: molecular mechanisms and biological functions of autophagy. *Dev. Cell.* **6**:463–477.
38. Cuervo, A. 2004. Autophagy: in sickness and in health. *Trends Cell Biol.* **14**:70–77.
39. Shintani, T., and Klionsky, D.J. 2004. Autophagy in health and disease: a double-edged sword. *Science.* **306**:990–995.
40. Amer, A., and Swanson, M. 2005. Autophagy is an immediate macrophage response to *Legionella pneumophila*. *Cell. Microbiol.* **7**:765–778.
41. Palmer, G., Kelly, M., and Sturtevant, J. 2007. Autophagy in the pathogen *Candida albicans*. *Microbiology.* **153**:51–58.
42. Kitanovic, A., et al. 2005. Phosphatidylinositol 3-kinase VPS34 of *Candida albicans* is involved in filamentous growth, secretion of aspartic proteases, and intracellular detoxification. *FEMS Yeast Res.* **5**:431–439.
43. Monari, C., et al. 2005. *Cryptococcus neoformans* capsular glucuronoxylomannan induces expression of fas ligand in macrophages. *J. Immunol.* **174**:3461–3468.
44. Deretic, V., et al. 2006. *Mycobacterium tuberculosis* inhibition of phagolysosome biogenesis and autophagy as a host defence mechanism. *Cell. Microbiol.* **8**:719–727.
45. Barchiesi, F., Colombo, A.L., McGough, D.A., and Rinaldi, M.G. 1994. Comparative study of broth macrodilution and microdilution techniques for in vitro antifungal susceptibility testing of yeasts by using the National Committee for Clinical Laboratory Standards' proposed standard. *J. Clin. Microbiol.* **32**:2494–2500.
46. National Committee on Clinical and Laboratory Standards. 2002. Reference method for broth dilution antifungal susceptibility testing of yeasts; approved standard – second edition. NCCLS document M27-A2. <http://www.nccls.org/source/orders/free/m27-a2.pdf>.
47. Dannaoui, E., et al. 2007. Results obtained with various antifungal susceptibility testing methods do not predict early clinical outcome in patients with cryptococcosis. *Antimicrob. Agents Chemother.* **50**:2464–2470.
48. Zhu, X., and Williamson, P.R. 2003. A CLC-type chloride channel gene is required for laccase activity and virulence in *Cryptococcus neoformans*. *Mol. Microbiol.* **50**:1271–1281.
49. Varma, A., Edman, J.C., and Kwon-Chung, K.J. 1992. Molecular and genetic analysis of *URA5* transformants of *Cryptococcus neoformans*. *Infect. Immun.* **60**:1101–1108.
50. Cox, G.M., Toffaletti, D.L., and Perfect, J.R. 1996. Dominant selection system for use in *Cryptococcus neoformans*. *J. Med. Vet. Mycol.* **34**:385–391.
51. Storz, P., Doppler, H., Wernig, A., Pfenzenmaier, K., and Muller, G. 1999. Cross-talk mechanisms in the development of insulin resistance of skeletal muscle cells palmitate rather than tumour necrosis factor inhibits insulin-dependent protein kinase B (PKB)/Akt stimulation and glucose uptake. *Eur. J. Biochem.* **266**:17–25.
52. Bain, J., Stubberfield, C., and Gow, N. 2001. Ura-status-dependent adhesion of *Candida albicans* mutants. *FEMS Microbiol. Lett.* **204**:323–328.
53. Panepinto, J., and Williamson, P. 2006. Intersection of fungal fitness and virulence in *Cryptococcus neoformans*. *FEMS Yeast Res.* **6**:489–498.
54. Tucker, S.C., and Casadevall, A. 2002. Replication of *Cryptococcus neoformans* in macrophages is accompanied by phagosomal permeabilization and accumulation of vesicles containing polysaccharide in the cytoplasm. *Proc. Natl. Acad. Sci. U. S. A.* **99**:3165–3170.
55. Levitz, S., DiBenedetto, D., and Diamond, R. 1987. A rapid fluorescent assay to distinguish attached from phagocytized yeast particles. *J. Immunol. Methods.* **101**:37.
56. Kozel, T.R., Pfrommer, G.S., Guerlain, A.S., Highison, B.A., and Highison, G.J. 1988. Strain variation in phagocytosis of *Cryptococcus neoformans*: dissociation of susceptibility to phagocytosis from activation and binding of opsonic fragments of C3. *Infect. Immun.* **56**:2794–2800.
57. Zhu, X., Gibbons, J., Garcia-Rivera, J., Casadevall, A., and Williamson, P.R. 2001. Laccase of *Cryptococcus neoformans* is a cell wall-associated virulence factor. *Infect. Immun.* **69**:5589–5596.
58. Varma, A., and Kwon-Chung, K.J. 1991. Rapid method to extract DNA from *Cryptococcus neoformans*. *J. Clin. Microbiol.* **29**:810–812.
59. Mizushima, N. 2004. Methods for monitoring autophagy. *Int. J. Biochem. Cell Biol.* **36**:2491–2502.
60. Zhang, S., et al. 2006. The Hsp70 member, Ssa1 acts as a DNA-binding transcriptional co-activator in *Cryptococcus neoformans*. *Mol. Microbiol.* **62**:1090–1101.
61. Noverr, M.C., Williamson, P.R., Fajardo, R.S., and Huffnagle, G.B. 2004. *CNLAC1* is required for extrapulmonary dissemination of *Cryptococcus neoformans* but not pulmonary persistence. *Infect. Immun.* **72**:1693–1699.
62. Cox, G., Mukherjee, J., Cole, G., Casadevall, A., and Perfect, J. 2000. Urease as a virulence factor in experimental cryptococcosis. *Infect. Immun.* **68**:443–448.
63. Liu, L., Wakamatsu, K., Ito, S., and Williamson, P.R. 1999. Catecholamine oxidative products, but not melanin, are produced by *Cryptococcus neoformans* during neuropathogenesis in mice. *Infect. Immun.* **67**:108–112.
64. Salas, S.D., Bennett, J.E., Kwon-Chung, K.J., Perfect, J.R., and Williamson, P.R. 1996. Effect of the laccase gene *CNLAC1*, on virulence of *Cryptococcus neoformans*. *J. Exp. Med.* **184**:377–386.
65. Cox, G., et al. 2003. Superoxide dismutase influences the virulence of *Cryptococcus neoformans* by affecting growth within macrophages. *Infect. Immun.* **71**:173–180.